

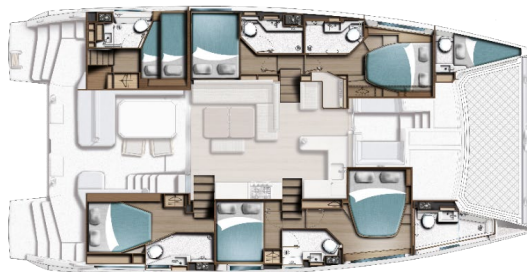


Moorings 5200 - 6-cabin

Specifications and Equipment List

Moorings Charter Upgrades in BOLD

Length Overall:	51ft 10in 15.75m
Waterline Length:	50ft 3in 15.31m
Beam:	26ft 9in 8.16m
Draft:	5ft 7in 1.7m
Displacement:	51665 lbs 23435 kg
Fuel Capacity:	238 USgal 900 L
Water Capacity:	185 USgal 700 L
Engines:	2 x Yanmar 57hp



DECK & HULL

- Guard wires with stanchions, bases, port & stbd side gates
- Guard wires across bow and stern
- 1600w vertical windlass with capstan, 10mm gypsy & hand-held remote
- Anchor bow roller fitting
- Anchor chain stopper
- Life raft locker
- Sliding companionway door
- Hardtop over fwd and aft cockpit complete with LED rope lighting and LED downlighting in aft cockpit
- Hardtop bimini over helm with s/s supports
- Folding swimming ladder with teak steps
- Aft Cockpit table
- Bridle mainsheet system (3:1 purchase)
- Trampoline
- Helmseat with upholstered base and backrest
- Mineral Glass grey tinted windows
- Hardtop supports
- Hatches:
 - 5 x Size 10 Flush Hatch
 - 5 x Size 44 Flush Hatch over cabins
 - 1x Gullwing hatch over port aft cabin
- Portlights:
 - 2 x Size 5 in salon forward windows
 - 10 x Size 1 in hull side
 - 2 x Size 1 in transom windows
- 1x Anchor/windlass locker with chain bin
- 3 x Foredeck lockers and a dedicated gas locker in the forward cockpit
- Forward access to foredeck with watertight Lewmar door
- 2 x Pulpits with seats
- 2 x Pushpits
- 4 x Coachroof handrails
- 2 x Side Deck steps handrails
- 1 x Lounge access steps handrails
- 2 x Transom grab handles
- 9 x 310mm mooring cleats
- 2 x Winch handles
- 2 x Primary electric winches
- **1 x Electric main sheet winch**

INITIALS_____

INITIALS_____

REV: 09-07-2025

Exhibit A

- 2 x Genoa cars & tracks
- 2 x Halyard clutches at helm (mainsail and spinnaker)
- 1 x clutch and cleat on mast for genoa halyard
- 2 x Genoa sheet clutch at helm
- 2 x Main sheet clutch at helm
- 2 x Reef clutch at helm
- 1 x Furler clutch at helm
- Drinks holders - 2 x Doubles in fwd cockpit and 1 x Double at helm
- **Custom stainless steel davit system with tackle and electric winch**
- **Helmsman enclosure**
- **Aft cockpit cushions (seats & backrests)**
- **Forward cockpit cushions**
- **Stainless steel anchor and galvanised chain**
- **Additional anchor with 26ft (8m) chain & 200ft (61m) warp**
- **Anchor bridle, shackles and hook**
- **Air conditioned forepeak berth & head incl. light, fan, large bowl electric toilet, holding tank, shower sump with electric pump, hand basin with combination faucet/shower mixer and outlet socket with integrated USB's**

MAST, RIGGING & SAILS

- **Custom heavy-duty battened charter mainsail**
- **Upgraded heavy-duty furling genoa with UV protection**
- **Stackpack system in Moorings blue with logo**
- **Boom cover**
- Natural anodized mast with standing rigging
- Natural anodized crossbeam with mooring cleats (x2)
- Wind indicator
- Genoa furler
- Mainsail full battened with 2 rows reefs
- Furling genoa
- Additional Spare conduit with messenger in mast
- Deck Light
- Horn
- Steaming Light
- Anchor Light

COACHROOF LOUNGE

- L-shaped settee with cushions and backrest
- Table with drinks holders
- Sunbed mattress

SALOON / INTERIOR

- **Silvertex "Macadamia" upholstery pack**
- Laminate finish with solid wood trims
- Wear resistant laminate flooring
- Saloon table folds into coffee table
- L-shape settee with movable bench
- LED overhead lighting
- Stowage space under settee cushions
- Forward doorway access to forward cockpit and foredeck
- Access to aft cockpit through sliding door
- Loose Upholsterd Bench to be used as:
 - Interior Saloon Seating
 - Aft Cockpit Seating
- Joinery staircases to hull accommodation
- **Interior saloon blinds - front & side windows**

GALLEY

- Avonite galley worktop surfaces
- Single lever mixer faucet with pull-out sprayer

INITIALS_____

INITIALS_____

REV: 09-07-2025

Exhibit A

- Single bowl s/s sink
- Dish and cutlery drying recess with drainage
- Cover for drying recess
- Vitrifrigo 2-drawer front-opening fridge/freezer
- 56USgal / 212Ltr 12v refrigeration
- 4-Burner gas hob
- Convection Microwave Oven
- Gas solenoid shut-off valve with control & warning light at cooker
- Gas cylinder regulator in dedicated LPG locker
- Separate garbage bin locker
- Stowage space in shelf lockers
- Stowage space under floorboards
- 1 x Pot storage drawer below oven
- 4 x Drawers alongside oven
- Smoke detector/alarm
- Carbon monoxide detector / alarm
- **Additional fridge/freezer**

NAVIGATION CONSOLE

- Chart table with storage locker under hinged lid
- LED overhead lighting
- Fixed Seat with Backrest

FORWARD CABINS x 2

- Laminate finish with solid wood trims
- Wear resistant laminate flooring
- Double berths:
 - Fwd Port Bunk (1.49m x 2.03m or 59" x 80")
 - Fwd Stbd Bunk (1.72m x 2.03m or 68" x 80")
- Bedside tables/shelves on both sides
- Hanging locker
- Large open shelves
- Stowage drawers under each bunk
- Stowage space under floorboards
- LED overhead lighting
- Concealed overhead rope lighting
- Concealed under bunk rope lighting
- 2 x LED reading lamps in each cabin
- Overhead roller blinds for privacy
- Large hull window incorporating portlight and pleated blind
- Carbon monoxide detector/alarm
- **Full length mirror**

STARBOARD AFT CABIN & MIDSHIP CABINS

- Laminate finish with solid wood trims
- Wear resistant laminate flooring
- Double berths:
 - Aft Stbd Bunk (1.57m x 2.03m or 62" x 80")
 - Midship Stbd Bunk (1.4m x 2.03m or 55" x 80")
- 1 x Hanging locker
- Bedside table outboard
- Bedside table inboard
- 1 x Stowage drawer under bunk
- Concealed overhead rope lighting
- Concealed under bunk rope lighting
- 2 x LED reading lamps
- Overhead roller blinds for privacy
- Large hull window incorporating portlight and pleated blind
- Carbon monoxide detector/alarm

INITIALS_____

INITIALS_____

REV: 09-07-2025

Exhibit A

- **Mirror**

AFT CABIN PORT

- Laminate finish with solid wood trims
- Wear resistant laminate flooring
- Top down bunks (2.0m x 0.8m (80" x 31.4") and 2.0m x 1.36m (80" x 53.5"))
- Bedside shelf inboard
- 1 x Hanging locker
- 1 x Stowage drawer under bunk
- LED overhead lighting
- 2 x LED reading lamps
- Overhead roller blinds for privacy
- Hull window incorporating portlight and pleated blind
- Carbon monoxide detector/alarm
- **Full length mirror**

HEAD COMPARTMENTS x 6

- Washbasins with basin mixer and Avonite top
- Under-basin locker with toilet roll holder
- Dedicated trashcan locker
- Vanity locker with mirror
- Double towel rail
- Double Coat hook
- Sliding heads door (x 4)
- Hinged door (Midship heads only)
- Shower compartment with lever mixer and adjustable shower rose
- Shower sump with automatic drainage system
- LED Overhead lighting
- Overhead roller blinds for privacy
- Electric toilets with dual flush (Salt and Fresh)

ELECTRICAL INSTALLATION

- **Global shore power pack**
- Digital monitoring with 7" Multi-function Display at helm
- LED Courtesy lights at stairways
- LED Bi-colour navlight, stern and anchor light
- 12v DC switch panel
- 1 x Double USB sockets at helm station
- 1 x Double USB outlets at Nav desk
- 1 x Double USB socket at saloon settee
- 2 x Double USB outlet in each cabin
- 1 x Magnetic mobile phone charger in saloon
- 4 x House batteries
- 2 x Engine start batteries
- **AGM batteries instead of standard and increased battery capacity**
- 3000W 110V Inverter for convection microwave oven
- 1 x House battery isolator switch
- 2 x Engine starter battery isolator switches
- 2 x Alternators, standard with engines
- **Sterling alternator to battery charger. Includes button at helm to link engine batteries to house batteries.**
- 1 x Electrical spares kit: fuses, relays, fuse holders
- **Stereo system with interior and exterior speakers**
- **Full Raymarine electronic package**
- **Rear-view camera**
- **Forward facing camera**
- **Genset**
- **Airconditioning**
- **Watermaker**
- **TV**

INITIALS_____

INITIALS_____

REV: 09-07-2025

Exhibit A

- **Solar panels**
- **Underwater lights**
- **Fans in the cabins**
- **Fridge/freezer installed in aft cockpit**
- **Gas BBQ/plancha grill installed in aft cockpit**

ENGINE & CONTROLS

- Double lever throttle / gearshift control
- Sound deadening panels in engine room
- 2 x Engine room ventilation fans and ducting
- 2 x Yanmar 57hp diesel engines with sail drives
- 2 x Propellers – fixed blade
- 2 x Fuel deck fillers
- 2 x Fuel filter / water separators
- 2 x Fuel tanks 243USgal / 920Ltr total capacity
- 2 x Exhaust skin fittings (s/s)
- 2 x Exhaust water locks
- 2 x Cooling water inlet strainers
- 2 x Exhaust cooling water temperature sensors with audible alarms at helm

RUDDER & STEERING SYSTEM

- Balanced spade rudders
- Rudder stock in stainless steel
- Bearings with fibreglass rudder tube
- Chain and wire steering system with bulkhead steering unit and brake
- Destroyer-type steering wheel
- Compass at helm position
- Emergency tiller (s/s)

RUNNING RIGGING

- 2 x Main sheets (3:1 purchase)
- 2 x Genoa sheets
- 3 x Halyards (main, genoa & spinnaker)
- 2 x Single line reefs lead aft
- Main boom topping lift

PLUMBING INSTALLATION

- Hot and cold pressurized fresh water system consisting of:
 - 2 x Water tanks, 185USgal / 700ltr total capacity with level reading and gauges
 - 2 x Fresh water pressure pump with accumulator tank
 - 2 x Hot water cylinders 22USgal / 83ltr total capacity
- Hot and cold transom shower
- 6 x Automatic shower drain pumps
- Holding tanks:
 - 6-Cabin: 4 x 13USgal + 1 x 22USgal = 74USgal / 280ltr total capacity
- 2 x Electric bilge pumps (keel sump) with float switches and alarm at switch panel
- 2 x Manual bilge pumps
- 2 x High water bilge float switches with alarm at switch panel
- 2 x Elec. bilge pumps (engine room) with float switch and alarm at switch panel
- Water purifying filter system (Purifying water tap located at galley)
- Freshwater connection

GENERAL EQUIPMENT

- **Mooring / dock lines / fenders**
- **Safety pack**
- **Charter pack**
- **Commissioning and delivery to charter base**

NOTE

INITIALS_____

INITIALS_____

REV: 09-07-2025

Exhibit A

The Builder reserves the right to change or amend the contents of this document at any time without prior notification to any third party, and no liability will be accepted for errors contained within the same.

INITIALS_____

INITIALS_____

REV: 09-07-2025